



The Richmond

Build: Very Posh

Project code: PSC210513

The Posh Shed Company
Little Orchard Farm
Eardisland
Herefordshire
HR6 9AS

Tel. 01544 387101
theposhshedcompany.co.uk



Overview

This stylish shed has an additional central gable over the door this not only adds to the aesthetics but allows the full height door to fit comfortably in the eaves side.

The Richmond shed lends itself to being longer rather than deeper, it is available in 3 widths and 2 depths making it an ideal candidate if you are a keen gardener, or if you are looking for an office place to work in, (lets get the dining room table back) why not choose it in one of our double glazed & fully insulated options. It has an eaves height of 6ft and a maximum height of 8ft 2in

The shed comes with single opening windows; two on the 10ft wide, three on the 13ft and four on the 16ft.

Floor

Posh & Very Posh - Floor

Your shed comes with a very solid floor. The floor is made with 18mm weather-proof plywood (WBP). A coat of wood preservative on the top surface to give an extra layer of protection. This plywood is fitted to 30mm tanolised timber bearers and then a waterproof membrane is fitted between. This waterproof membrane also laps up around the edges where it is joined with the same membrane that is fitted within the walls.

The key to all outside buildings and the associated damp issues is to ensure that there is a good airflow under the shed. To this end the support beams built into the floor need to sit on a solid surface. There are many suitable surfaces, shingle, slabs, concrete, decking, tarmac to name but a few, these are what we call the sub base. We are happy to fit this, for a small additional change, or it can be prepared in advance of us coming



Walls

Very POSH - WALLS

They are built using a unique triple wall construction developed by us and not available from any other shed manufacturer. The initial structure for the walls comes from a frame work, this is built using good quality 38mm x 50mm redwood timber fully finished with rounded corners and a smooth surface. The framework is screwed together, rather than being nailed, this gives additional strength to the shed. Redwood timber is used for its superior strength and quality of finish over the more often used white wood.

To this is fitted a 6mm WBP plywood skin to give a good finish in the inside and provide strength. On the outside a redwood pressure treated cladding with TGV joint is fitted. Between the two layers is fitted a fully waterproof and breathable membrane. The outside is painted to suit

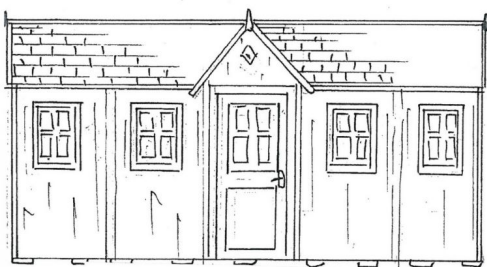
Roof

Very Posh - Roof

Each part of the shed is important but obviously the roof initially takes the most weather. The Posh Shed Company roofs are solid and dependable as well as being attractive. The main beams holding up the roof are either 75mm x 50mm or 100mm x 50mm depending on the size of the shed. The main roof panel is built using 12mm wbp plywood this has soffit boards pre-fitted on either end to ensure a snug fit. The roof has a layer of waterproof membrane fitted and then a top layer of either felt shingles, cedar shingles or man-made slate depending on your taste.

Doors

These are not stuck on after thoughts on Posh Sheds. All our doors are made in robust frames which form part of the sheds construction. Doors are hinged inset in the frame and when closed keep the water where it belongs, outside.





Glazing can be done with super tough polycarbonate sheet or glass. Doors come with a 5 lever sash lock and come with a choice of handles, black, chrome or brass effect. The door is built to the same specification as you would expect to fit in a house.

Windows

Our windows are made in robust frames which form part of the sheds construction. The windows are hinged inset in the frame and when closed keep the water where it belongs, outside. Glazing can be done with super tough polycarbonate sheet or glass whichever you prefer. To finish off your window we offer a choice of black, silver or brass effect for the casement stays and catch.

Colours

Included in the price of your very posh or unbelievably posh shed is your choice of colour from our range of Teknos wood protection.

Or for an additional cost we are happy to finish your shed in Little Greene Paint Intelligent Exterior Eggshell, Farrow and Ball Exterior Eggshell or Sadolin classic and opaque timber protection

All these finishes are applied to your shed before it arrives so there is no extra work for you to do. These ranges of finishes have been selected as they will provide years of protection against moisture, mould and dirt.

Shed Measurements

The Richmond

	10ft x 6ft	13ft x 6ft	16ft x 6ft	10ft x 8ft	13ft x 8ft	16ft x 8ft
	(3m x	(4m x	(4.9m x	(3m X	(4m x	(4.9m X
	1.8m)	1.8m)	1.8m)	2.4m)	2.4m)	2.4m)
External	10ft 3in	13ft 3in	16ft 3in	10ft 3in	13ft 3in	16ft 3in



width	(3.1)	(4.1)	(5.1)	(3.1)	(4m)	(5m)
External	6ft 3in	6ft 3in	6ft 3in	8ft 3in	8ft 3in	8ft 3in
depth	(1.9m)	(1.9m)	(1.9m)	(2.5m)	(2.5m)	(2.5m)
Eaves	5ft 6in	5ft 6in	5ft 6in	5ft 6in	5ft 6in	5ft 6in
height	(1.7m)	(1.7m)	(1.7m)	(1.7m)	(1.7m)	(1.7m)
Ridge	8ft 2in	8ft 2in	8ft 2in	8ft 3in	8ft 2in	8ft 2in
height	(2.5m)	(2.5m)	(2.5m)	(2.5m)	92.5m)	(2.5M)
Door -	2ft 2in	2ft 2in	2ft 2in	2ft 2in	2ft 2in	2ft 2in
opening	(0.67m)	(0.67)	(0.67)	(0.67)	(0.67)	(0.67)
width						
Door -	5ft 8in	5ft 8in	5ft 8in	5ft 8in	5ft 8in	5ft 8in
opening	(1.73m)	(1.73m)	(1.73m)	(1.73m)	(1.73m)	(1.73m)
height						
Window	1ft 5in	1ft 5in	1ft 5in	1ft 5in	1ft 5in	1ft 5in
- opening	(0.43m)	(0.43)	(0.43)	(0.43)	(0.43)	(0.43)
width						
Window	26in	26in	26in	26in	26in	26in
-	(0.67m)	(0.67m)	(0.67m)	(0.67m)	(0.67m)	(0.67m)
Opening						
height						
Number	2	3	4	2	3	4
of single						
windows						

Please note - Our sheds are handmade and as such sizes may vary slightly, please allow for the roof overhang.



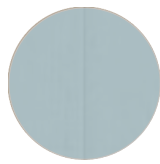
Colours



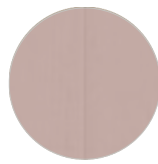
Teknos
Woodland Green



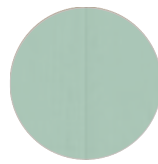
Teknos
Pearl



Teknos
Forget Me Not Blue



Teknos
Dusky Rose



Teknos
Spearmint



Teknos
Posh Elephant

Available in colours shown above.

Prices

	Felt Shingles	Cedar Shingles	Slate Effect	Delivery & Installation
10' x 8'	£8,783	£9,567	£9,050	Included
10' x 6'	£7,794	£8,381	£7,994	Included
13' x 6'	£9,191	£9,975	£9,457	Included
16' x 6'	£10,714	£11,692	£11,046	Included
13' x 8'	£10,167	£11,213	£10,523	Included
16' x 8'	£11,544	£12,848	£11,988	Included